

ECONOMY

CONSUMER PRICE INDEX, BRISBANE(a)

	2008-09	2009-10
Food	188.0	191.2
Alcohol and tobacco	259.8	273.0
Clothing and footwear	107.2	107.1
Housing	168.7	176.0
Household contents and services	130.2	134.8
Health	250.4	261.4
Transportation	165.1	170.7
Communication	115.9	116.3
Recreation	132.8	133.1
Education	312.0	329.7
Financial and insurance services(b)	111.1	110.2
All groups	171.0	175.5

(a) Unless otherwise specified, base of each index is 1989-90 = 100.

(b) Base: June quarter 2005 = 100.

EXTERNAL MERCHANDISE TRADE

	2008-09	2009-10
	\$m	\$m
Exports		
Foreign	56,553	43,273
Interstate(a)	19,463	20,824
Imports		
Foreign	33,972	31,048
Interstate(a)	39,126	36,142

(a) From the June quarter 2008, Queensland interstate trade estimates have been produced using sample survey methodology. As the new methodology differs significantly from that of the old survey, the results should be considered a break in series.

STATE GOVERNMENT FINANCE

	2007-08	2008-09
	\$m	\$m
Total GFS revenue	41,048	44,144
Total GFS expenses	42,110	46,701
GFS Government Finance Statistics		

ENVIRONMENT

CLIMATIC DATA, BRISBANE

Month	Unit	2009			2010	
		Dec	Mar	Jun	Sep	Sep
Mean daily maximum	°C	28.9	27.3	21.2	23.5	
Mean daily minimum	°C	21.5	20.0	10.3	14.9	
Rainfall, total	mm	221.2	201.4	12.8	77.0	
Rain days	no.	15	22	7	8	
Mean daily sunshine	hours	8.3	5.5	5.9	6.0	
Strong wind days, over 50 km/h	no.	6	2	1	1	

Source: Bureau of Meteorology.

Data in this publication are subject to revision.

SYMBOLS AND ABBREVIATIONS

°C	degrees Celsius
\$	dollars
GFS	government finance statistics
ha	hectare
mm	millimetre
\$m	million dollars
n.a.	not available for publication
no.	number
%	per cent
\$'000	thousand dollars
'000	thousand
^	estimate has a relative standard error of 10% to 25% and should be used with caution

ACKNOWLEDGEMENTS

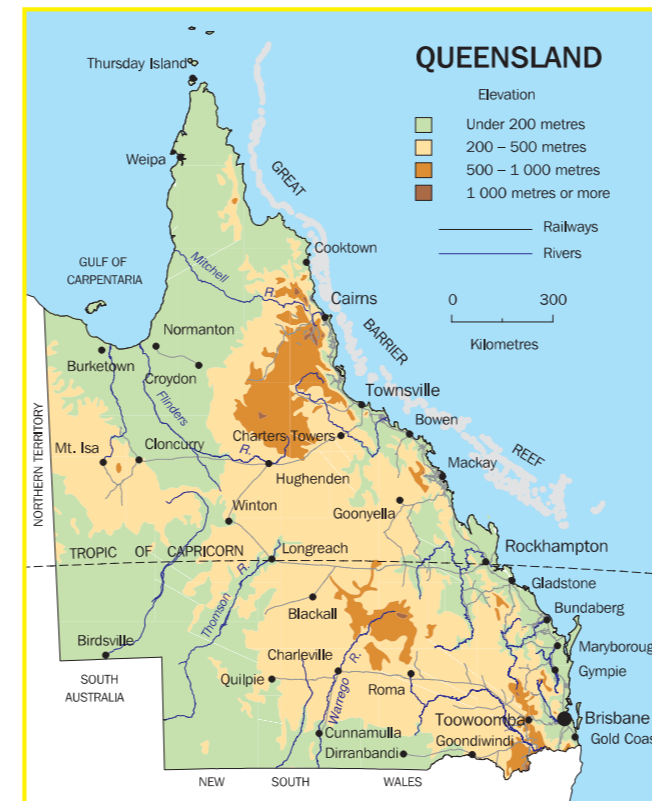
ABS publications draw extensively on information provided freely by individuals, businesses, governments and other organisations. Their continued cooperation is very much appreciated; without it the wide range of statistics published by the ABS would not be available for general use by the community. Information received by the ABS is treated in strict confidence as required by the *Census and Statistics Act 1905*.

GEOGRAPHY

Situated generally between 10° and 29° south latitude and between 138° and 154° east longitude, Queensland occupies the north-eastern portion of the Australian continent. Of the total area of approximately 1.73 million square kilometres, just over half is north of the Tropic of Capricorn. Of the states and territories of Australia, Queensland ranks second in area and third in population.

GOVERNMENT

Queensland is a constituent state of the Commonwealth of Australia, and observes the Australian Constitution. While returning elected members to both upper and lower houses of the Federal Parliament, Queensland is unique in that its own State Parliament has only one house – the Legislative Assembly. Local government derives its powers from Acts passed by the State Parliament. The capital city is Brisbane.



FOR MORE INFORMATION ...

Cat. no. 1312.3

INTERNET

www.abs.gov.au

The ABS website is the best place for data from all our publications and information about the ABS. All statistics on the ABS website can be downloaded free of charge.

LIBRARY

A range of ABS publications is available from public and tertiary libraries Australia wide. Contact your nearest library to determine whether it has the ABS statistics you require, or visit our website for a list of libraries.

INFORMATION AND REFERRAL SERVICE

Our consultants can help you access the full range of information published by the ABS that is available free of charge from our website, or purchase a hard copy publication.

Information tailored to your needs can also be requested as a 'user pays' service.

Specialists are on hand to help you with analytical or methodological advice.

PHONE

1300 135 070

EMAIL

client.services@abs.gov.au

FAX

1300 135 211

WEB ADDRESS

www.abs.gov.au

POST

Client Services, ABS
GPO Box 796
Sydney NSW 2001

Cover: Surfers Paradise Skyline
Source: Thinkstock

© Commonwealth of Australia 2011
Produced by the Australian Bureau of Statistics



Queensland at a Glance 2011



PEOPLE

DEMOGRAPHY

	2004	2008	2009
Estimated resident population(a)	'000	'000	'000
Queensland	3,900.9	4,308.6	4,427.3
(a) At 30 June.			
Components of population change(a)	no.	no.	no.
Natural increase(b)	25,278	35,449	38,436
Net overseas migration	25,339	54,052	61,884
Net interstate migration	35,498	23,088	18,388

(a) Twelve months ended 30 June.

(b) Excess of births over deaths.

Vital statistics(a)	no.	no.	no.
Births	49,940	63,132	66,097
Deaths	24,514	27,335	26,316
Marriages	24,312	26,803	26,342
Divorces	13,279	10,615	11,174

(a) Twelve months ended 31 December. Vital events are published on a year of registration basis.

Age groups(a)	%	%	%
0-14 years	21	20	20
15-24 years	14	14	14
25-44 years	29	28	28
45-64 years	24	25	25
65 years and over	12	12	12

(a) As proportion of Queensland estimated resident population.

LABOUR MARKET

	2004-05	2008-09	2009-10
Annual averages	'000	'000	'000
Labour force	2,054.6	2,356.0	2,410.7
Employed persons	1,953.3	2,252.2	2,273.5
Unemployed persons	101.3	103.9	137.2
	%	%	%
Unemployment rate	4.9	4.4	5.7
Participation rate	65.6	67.7	67.5
	2005	2009	2010
	'000	'000	'000
Job vacancies, Aug	27.7	n.a.	33.4
	2005	2009	2010
	\$	\$	\$
Average weekly earnings, Aug.	754.70	996.50	983.90

REGIONAL POPULATION

	2004	2008	2009
Selected local government areas(a)	'000	'000	'000
Brisbane (City)	957.9	1,031.3	1,052.5
Bundaberg (Region)	83.2	92.7	95.1
Cairns (Region)	137.5	159.2	164.4
Charters Towers (Region)	12.2	12.5	12.7
Fraser Coast (Region)	82.3	96.0	99.5
Gladstone (Region)	50.9	57.8	59.6
Gold Coast (City)	435.8	499.5	515.2
Ipswich (City)	133.2	154.7	162.4
Mackay (Region)	99.0	113.0	116.1
Moreton Bay (Region)	315.5	357.9	371.2
Mount Isa (City)	20.5	22.0	21.8
Rockhampton (Region)	103.4	111.9	114.1
Roma (Region)	12.8	13.2	13.2
Sunshine Coast (Region)	277.8	313.9	323.4
Toowoomba (Region)	144.7	155.6	159.1
Townsville (City)	155.4	176.1	181.7

(a) Estimated resident population at 30 June.

EDUCATION

	2004	2008	2009
	no.	no.	no.
Schools, August	1,733	1,713	1,710
Government	1,284	1,250	1,245
Non-government	449	463	465
Students, August(a)	643,767	712,434	724,426
Government	453,370	479,850	484,615
Non-government	190,397	226,612	233,373

(a) Including full-time and part-time primary and secondary students. The breakdown into government and non-government is available only for full-time students.

CRIME AND JUSTICE

	2003-04	2007-08	2008-09
	no.	no.	no.
Total police strength at 30 June(a)	9,003	10,237	10,645
Sentence outcomes in Magistrates Courts	113,694	139,169	148,738
Sentence outcomes in higher courts	5,305	4,698	4,511

(a) Including recruits in training.

Source: Queensland Police Service.

INDUSTRY

AGRICULTURE(a)

		2007-08	2008-09
Agricultural establishments(b)	no.	26,159	25,136
Area of farms	'000 ha	141,058	141,210
Total area of crops(c)	'000 ha	2,183	2,795
Agricultural production	'000 tonnes	'000 tonnes	
Apples		35	25
Bananas		188	247
Barley		143	173
Capsicums, chillies and peppers		41	39
Carrots		25	^30
Cotton lint		42	154
Grain sorghum		2,519	1,771
Grapes		15	^8
Lettuce		58	56
Mandarins		^69	56
Potatoes		99	^98
Pumpkins		^44	46
Sugar cane cut for crushing		29,787	29,842
Strawberries		13	14
Sweet corn		23	14
Tomatoes		132	138
Watermelons		62	^60
Wheat		954	2,016
Livestock	'000	'000	
Meat cattle		11,731	12,151
Milk cattle		174	^181
Sheep and lambs		3,960	4,285
Pigs		610	596
Chickens for meat production		11,588	^15,874
Chickens for egg production		2,933	3,372
Brokers and dealers receipts of taxable wool	tonnes	12,284	10,829
Value of agricultural production	\$m	\$m	
Crops(d)		4,800.4	4,883.5
Livestock disposals		3,935.1	4,033.2
Livestock products		459.4	488.8
Total		9,195.0	9,405.5

^ estimate has a relative standard error of 10% to 25% and should be used with caution.

(a) Establishments with an estimated value of agricultural operations of \$5,000 or more.

(b) At 30 June.

(c) Excluding crops harvested for hay and seed, and pasture and grasses.

(d) Including pastures and grasses, vegetables, fruit and nuts.

MINING

		2007-08	2008-09
Mineral commodities produced	'000 tonnes	'000 tonnes	
Black coal (saleable)	'000 tonnes	180,476	190,553
Bauxite	'000 tonnes	19,386	17,415
Copper (metal content)	'000 tonnes	391	355
Lead (metal content)	'000 tonnes	479	411
Gold (metal content)	kilograms	20,662	18,110
Silver (metal content)	tonnes	1,693	1,560
Zinc	'000 tonnes	879	880
		\$m	\$m
Value of mineral commodities produced		26,718	49,430

SELECTED INDUSTRIES

		2008-09	2009-10
	Employment(a)	Sales & service income (b)	
	'000	\$m	
Agriculture, forestry and fishing	120	15,568	
Mining	37	45,907	
Manufacturing	182	78,316	
Electricity, gas, water and waste services	25	14,516	
Construction	256	65,016	
Wholesale trade	92	74,776	
Retail trade	253	66,429	
Accommodation and food services	157	14,515	
Transport, postal and warehousing	122	25,528	
Information media and telecommunications	23	7,781	
Rental, hiring and real estate services	82	16,600	
Professional, scientific and technical services	160	26,089	
Administrative and support services	138	10,173	
Public administration and safety	12	1,056	
Education and training (private)	57	2,351	
Health care and social assistance (private)	183	11,285	
Arts and recreation services	35	4,434	
Other services	92	9,971	
Total selected industries(c)	2,028	490,311	

(a) At 30 June, including working proprietors.

(b) Including rent, leasing and hiring income.

(c) Excluding ANZSIC Division K - Financial and insurance services.

BUILDING

	2008-09	2009-10
Number of dwelling unit completions	no.	no.
New houses	26,210	22,889
New other residential building	12,166	10,634
Conversions, etc.	178	62
Total	38,554	33,585
Value of building work completed	\$m	\$m
New houses	6,962	6,223
New other residential building	3,013	2,790
Alterations and additions	1,416	1,269
Non-residential building	7,823	6,062
Total	19,214	16,345

TOURIST ACCOMMODATION(a)

		2008-09	2009-10
Number of establishments(b)	no.	1,135	1,143
Number of rooms(b)	no.	61,876	61,632
Room occupancy rate	%	62.8	61.8
Guest nights occupied	'000	27,101.3	26,573.8
Guest arrivals	'000	10,119.2	9,938.7
Takings from accommodation	\$m	2,047	2,007

(a) Hotels, motels and serviced apartments with 15 or more rooms.

(b) At 30 June.

SALES OF NEW MOTOR VEHICLES(a) (b)

	2008-09	2009-10
	'000	'000
Passenger vehicles	100	111
Sports utility vehicles	39	47
Other Vehicles	54	51
Total	193	209

(a) Replacement content due to Registered Motor Vehicle data being unavailable

(b) Based on trend data

RETAIL TURNOVER

	2008-09	2009-10
	\$m	\$m
Food retailing	19,162	20,204
Household goods retailing	9,009	8,688
Clothing, footwear and personal accessory retailing	3,328	3,267
Department stores	3,727	3,717
Other retailing	7,336	7,265
Cafes, restaurants and takeaway food services	5,795	5,913
Total	48,357	49,053